

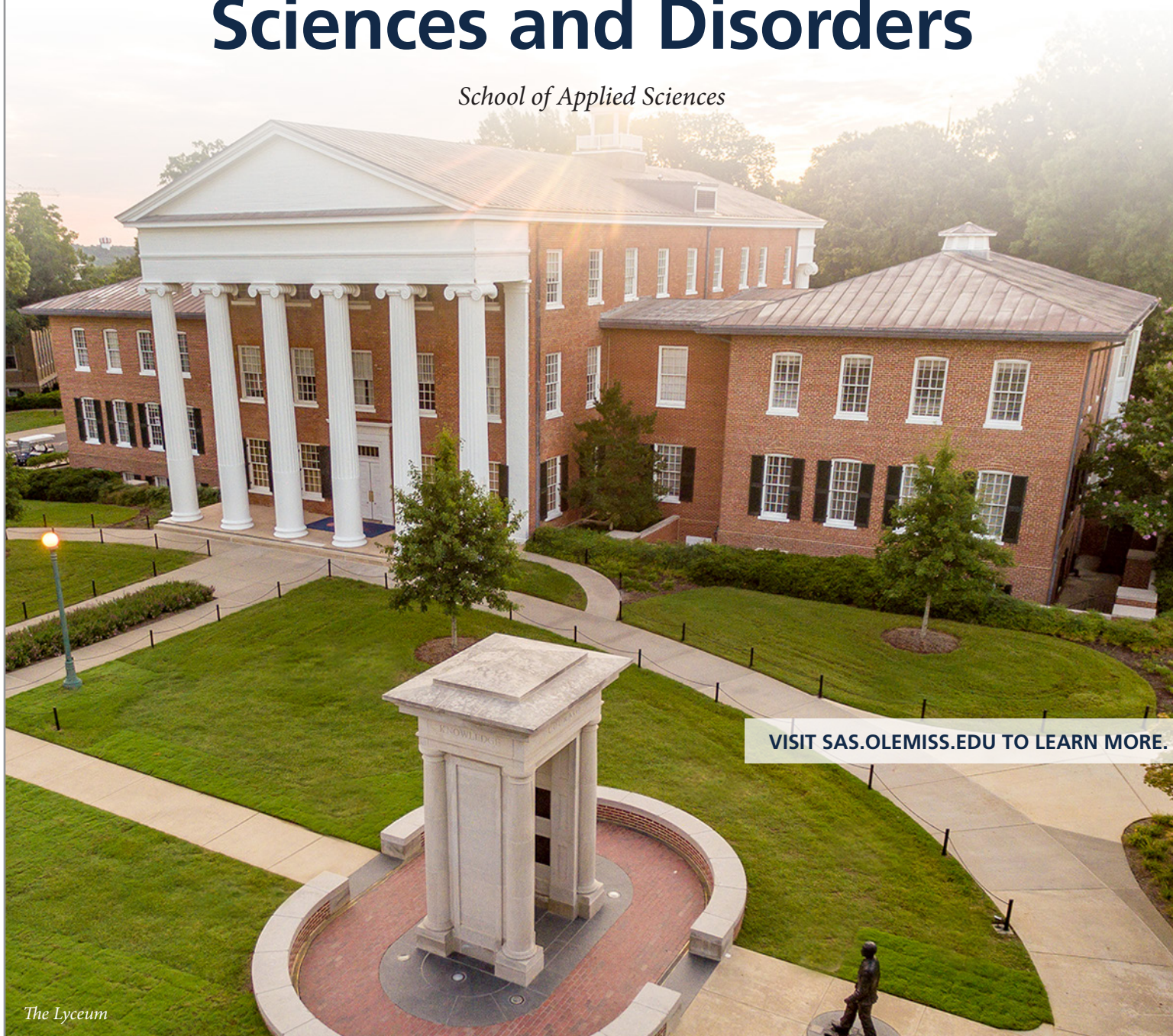


# THE UNIVERSITY *of* MISSISSIPPI

*Inviting Applications and Nominations for*

## Chair of the Department of Communication Sciences and Disorders

*School of Applied Sciences*



VISIT [SAS.OLEMISS.EDU](https://sas.olemiss.edu) TO LEARN MORE.

**THE SCHOOL OF APPLIED SCIENCES AT THE UNIVERSITY OF MISSISSIPPI** seeks applicants at the rank of associate or full professor to serve as **CHAIR OF THE DEPARTMENT OF COMMUNICATION SCIENCES AND DISORDERS**. The new chair will have the opportunity to develop and expand services for an Autism Center, establish a Ph.D. program that is in the planning stages, develop and expand online and hybrid course offerings, and hire additional clinical staff and faculty. This administrator will report to the Dean of the School of Applied Sciences. The successful candidate may begin as early as July 1, 2023.



## THE UNIVERSITY OF MISSISSIPPI

The University of Mississippi, affectionately known as Ole Miss, is the state's flagship university. Included in the elite group of R1: Doctoral Universities - Highest Research Activity by the Carnegie Classification, Ole Miss has a long history of producing leaders in public service, academics, and business. Over the last 12 years, the University has been continuously recognized as one of the best colleges in the nation to work for by *The Chronicle of Higher Education*.

The University's 16 academic divisions include a major medical school; nationally recognized schools of accountancy, law, and pharmacy; and an Honors College acclaimed for a blend of academic rigor, experiential learning, and opportunities for community action. Recognized among the nation's most beautiful, the Ole Miss main campus is in Oxford, which is routinely acknowledged as one of the country's best college towns.

Nearly 22,000 students were enrolled across the University's seven campuses for fall 2022. This

included 4,480 students, a 5.1% increase over 2021, and the largest increase in the number of incoming freshmen from one fall to the next in the University's history. The University of Mississippi's retention rate of last year's first-time students reached 89%—the University's highest retention rate ever and 15 percentage points higher than the most recent national average.

### ***The University of Mississippi Mission***

*As Mississippi's first comprehensive, public university and academic medical center, the University of Mississippi transforms lives, communities, and the world by providing opportunities for the people of Mississippi and beyond through excellence in learning, discovery, healthcare, and engagement.*

### ***The University of Mississippi Vision***

*The University of Mississippi aspires to be a preeminent public international research university and a leading force for innovation and opportunity in Mississippi, the United States, and the world.*



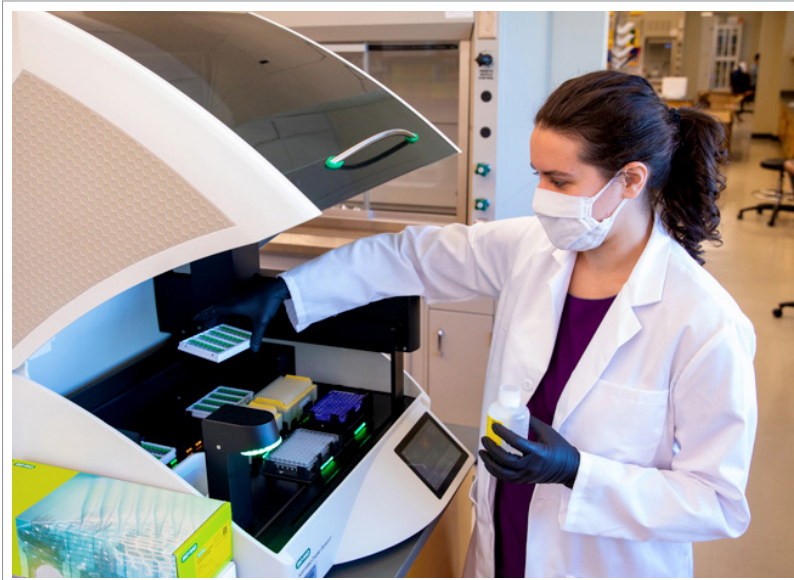
## SCHOOL OF APPLIED SCIENCES (SAS)

Approximately 2,600 undergraduate and graduate students study across the School's five academic departments: Communication Sciences and Disorders; Criminal Justice and Legal Studies; Health, Exercise Science, and Recreation Management; Nutrition and Hospitality Management; and Social Work. Offering 10 undergraduate, 10 master's and four Ph.D. programs, the School has 54 tenured and tenure-track professors, 20 instructors, nine academic advisors, and a host of additional support staff. Of full-time faculty, 77% hold terminal degrees.

As an interdisciplinary school, SAS provides students the opportunity to tailor majors and minors and undergraduate and graduate degrees to create the perfect educational background for their personal career aspirations across industries. Degree programs include Applied Gerontology, Communication Sciences and Disorders, Criminal Justice, Dietetics and Nutrition, Exercise Science, Hospitality Management, Law Studies, Public Health and Health Sciences, Social Work, and Sport and Recreation Administration.

The School's academic units are complemented by the federally funded Institute of Child Nutrition, the Jackson Heart Study Vanguard Center at Oxford, the Center for Health and Sports Performance, the Center for Evidence-based Policing and Reform, and a Speech and Hearing Clinic. Over the last five years, the School has generated more than \$8 million annually in external funding for research and community engaged projects.

SAS graduates pursue a broad breadth of careers that include researchers, registered dietitians, exercise



physiologists, homeland security experts, FBI agents, social workers, elder care specialists, recreation administrators, attorneys, hotel and restaurant managers, event planners, audiologists, and speech-language pathologists, to name a few. SAS programs also serve as pre-professional programs for those pursuing advanced degrees in health professions, such as nursing, medicine, dentistry, and physical and occupational therapy.

Last year, the School launched a five-year strategic plan, *Build Your Legacy: School of Applied Sciences Strategic Plan 2021–2026*. The plan has six goals: 1) Grow innovative, self-sustaining, interdisciplinary degree programs; 2) Provide an unmatched educational experience for all learners; 3) Attract, retain, and graduate students with the knowledge, skills, and leadership abilities to make a positive difference in the world; 4) Strengthen research productivity and community engagement with integrity, compassion, and the highest ethical standards; 5) Enhance and nurture the alliance between School of Applied Sciences learners—past present, and future, and 6) Enrich everything we do with diversity, equity, and inclusion. Read the complete *School of Applied Sciences Strategic Plan 2021–2026* at <https://sas.olemiss.edu/mission/>.

In the School's strategic plan, the primary objective of the School of Applied Sciences is to provide a relevant, formal education so that all learners are inspired and equipped to advance their profession, serve others, and improve the human condition through discovery, ingenuity, hard work, and compassion. The faculty and staff serve the students

in the classroom, laboratory, professional settings, and communities. This noble work begins with the instruction and practice of evidence-based, discipline-specific information. On this foundation, the School explores ways to engage across disciplines to address major challenges facing the communities, region, and world. Through it all, the School is dedicated to developing, encouraging, and inspiring a culture of access, inclusion, and respect for all so that all who persevere may achieve their career and life goals.

### **SAS Mission**

*We learn, lead, and serve to improve the health and well-being of Mississippi, our Nation, and world.*

### **SAS Vision**

*All are inspired and equipped to advance their profession, serve others, and improve the human condition through discovery, ingenuity, hard work, and compassion.*

## **DEPARTMENT OF COMMUNICATION SCIENCES AND DISORDERS (CSD)**

### **Opportunities for a new Department Chair**

The Department of Communication Sciences and Disorders (CSD) is a vibrant home to a family of scholars and clinicians dedicated to serving the community and preparing students to serve in this important field. There are three academic options: Bachelor of Science in Communication Sciences and Disorders, Master of Science in Communication Sciences and Disorders, and a Minor in Communication Sciences and Disorders. A Ph.D. program is in the planning stage. The program currently has 360 students, including 275 undergraduate and 89 graduate students.

Faculty members are from various national, cultural, and linguistic backgrounds and bring expertise in various sub-fields of CSD. The department has six faculty members with Ph.D. degrees, one faculty member and one instructor with Ed.D. degrees, one clinical associate professor and two clinical supervisors with Au.D. degrees, and five clinical



supervisors with master's degrees in Speech-Language Pathology. The new dean will have the opportunity to hire additional clinical staff and faculty.

The Department has numerous externship sites across the USA. In and surrounding the Oxford area, CSD has clinical partnerships with the School of Education's Willie Price Lab School and the North Mississippi Literacy Project with various local school districts.

CSD has several specialty clinics. The HILL Program provides speech and language services for children with moderate to severe language disorders. The Memory Café Program is for individuals with dementia and their caretakers. The Pediatric Language Group is a program for children with mild language disorders. It also offers early intervention services, funded by a state grant, for children from birth to 2 years of age.

The Department is housed in the University's newly renovated South Oxford Center, which includes University of Mississippi Speech and Hearing Clinic and the HILL Program for children with language and learning disorders. The facility offers nine active research laboratories. Among the extensive research currently being conducted are child language acquisition, cleft palate and craniofacial problems, language processing in aging, prosthetic

stuttering management, orofacial myofunctional disorders, bilingualism, augmentative and alternative communication, and hearing conservation.

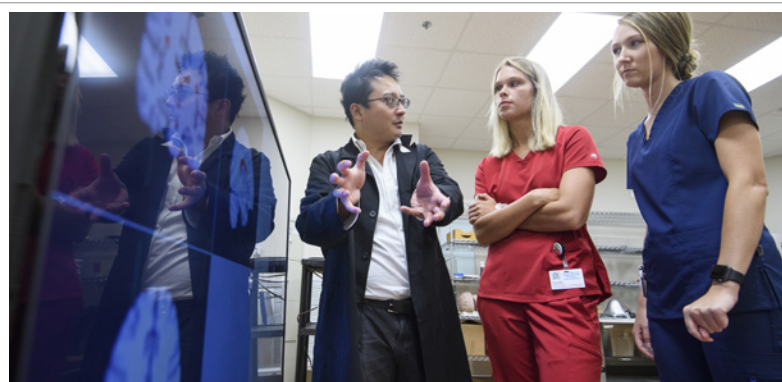
For the year 2021–2022, CSD had 100% job placement for graduate students. Additionally, 100% of the enrolled students completed the program within their expected time frame, and 97.3% passed the PRAXIS exam.

The top-ranked graduate program in Mississippi, the CSD graduate program is accredited by the Council on Academic Accreditation in Audiology and Speech-Language Pathology of the American Speech-Language-Hearing Association through March 2027.

## THE OPPORTUNITY

The Chair of the Department of Communication Sciences and Disorders is a 12-month, tenure-track position at the rank of associate or full professor as determined by research and scholarly publication records and academic achievements. The School seeks an academic leader who will bring a dynamic vision for the future direction of the Department that enables it to achieve its full potential in teaching, training, research, and service.

Reporting to the Dean of the School of Applied Sciences, the Chair is charged with the primary administrative responsibilities of the Department.



In this role, the Chair oversees the overall direction of the Department, fosters positive and collegial relationships, maintains accreditation standards, and enhances scholarly activities within the Department. Additional responsibilities include personnel administration, budgeting, planning, assessment, development/fundraising, sponsored program activities, agency outreach, alumni relations, and other duties as assigned.

Excellence in the School of Applied Sciences and within the Department of Communication Sciences and Disorders can only be fully realized by individuals who share the commitment to diversity, inclusion, and respect for the dignity of every individual. The successful candidate will demonstrate commitment to these values.

## REQUIREMENTS

- Applicants must have a Ph.D. or equivalent in Communication Sciences and Disorders or closely related field
- Demonstrated evidence of administrative experience
- An engaged and ongoing research agenda with a strong record of extramurally funded research and/or community engagement grants
- A record of peer-reviewed publications in high impact journals, research/scholarly achievement, and a record of excellence in teaching undergraduate and graduate students

### Preferred

- Experience working in a speech and hearing clinical setting and/or ASHA professional certification



### PETER W. GRANDJEAN, PH.D. DEAN OF SCHOOL OF APPLIED SCIENCES

Dr. Peter W. Grandjean joined the University as Dean of the School of Applied Sciences in January of 2019. With more than 30 years of experience in education, he oversees one of the fastest-growing schools on campus.

Dr. Grandjean is an internationally recognized professor and researcher in the areas of lipid metabolism, transport, and vascular physiology. His research is aimed at determining the immediate and short-term metabolic and cardiovascular responses to a variety of exercise interventions, including the combined and unique influence of exercise and meal nutrient composition, functional foods, pharmacological agents, and modest weight loss on cardiovascular and metabolic health. This line of inquiry has implications for identifying the amount and efficacy of exercise in improving cardiovascular and metabolic health.

Dr. Grandjean's research has resulted in more than 200 related peer-reviewed publications and communications, mentoring of over 20 former and current doctoral students, and consistent external funding. He is a member of the

American Physiological Society, the American College of Sports Medicine, and the National Strength and Conditioning Association.



*The University of Mississippi is an EOE/AA/Minorities/Females/Vet/Disability/Sexual Orientation/Gender Identity/ Title VI/Title VII/Title IX/504/ADA/ADEA employer. The University of Mississippi provides equal opportunity in any employment practice, education program, or education activity to all qualified persons. The University complies with all applicable laws regarding equal opportunity and affirmative action and does not unlawfully discriminate against any employee or applicant for employment based upon race, color, gender, sex, pregnancy, sexual orientation, gender identity or expression, religion, citizenship, national origin, age, disability, veteran status, or genetic information.*



### Lafayette County, Oxford, University (LOU) Community

Touted as the “Cultural Mecca of the South,” Oxford is where musicians, artists, and writers alike find inspiration in the city’s rich history, small-town charm, and creative community. Ranked among the Top 100 Best Places to Live (2019) by Livability, this welcoming

community offers quality schools, a robust parks and recreation department, and affordable housing options from charming neighborhoods to vibrant communities within easy commuting distance. Over the years, Oxford has become known for offering exceptional culinary experiences. As the home of the University of Mississippi and the Ole Miss Rebels, Oxford always has something happening to immerse yourself in.

## APPLICATION & NOMINATION PROCESS

*Confidential inquiries are welcomed, and nominations are invited.*

### Applications

- 1) Application packet must include:
  - a) A letter of application
  - b) Curriculum vitae
  - c) At least five references with full contact information including e-mails—**no paper copies will be accepted** (*References will not be contacted without consent from applicant.*)
- Note: Official transcripts for the finalist must be received prior to hire.
- 2) **Submit application packet (preferably as PDFs) to [OleMiss-CSD@myersmcrac.com](mailto:OleMiss-CSD@myersmcrac.com).** Applications are being reviewed. Additional information will be requested upon receipt of application. Applications will be accepted until the position is filled.

### Nominations

Submit nominations to:  
**[OleMiss-CSD-nominate@myersmcrac.com](mailto:OleMiss-CSD-nominate@myersmcrac.com)**  
 with complete contact and e-mail information for the individual being nominated.

**Emily Parker Myers**, CEO, and **Jennifer Barfield**, Executive Vice President, of Myers McRae Executive Search and Consulting, are assisting The University of Mississippi with this search. Schedule a conversation with Jennifer Barfield at [JenniferBarfield1@myersmcrac.com](mailto:JenniferBarfield1@myersmcrac.com).

